



# SERVICE PARTS LIST

**BULLETIN NO.**  
54-05-0775

SPECIFY CATALOG NO. AND SERIAL NO. WHEN ORDERING PARTS		REVISED BULLETIN	DATE
8 GALLON PUMPING VACUUM CLEANER			Sept. 2001
CATALOG NO. 8940-20	STARTING SERIAL NUMBER	WIRING INSTRUCTION	
	Series 1	See reverse side	

**EXAMPLE:**

00  
0

Component Parts (Small #) Are Included  
When Ordering The Assembly (Large #).

★ = Part number change from  
previous service parts list.

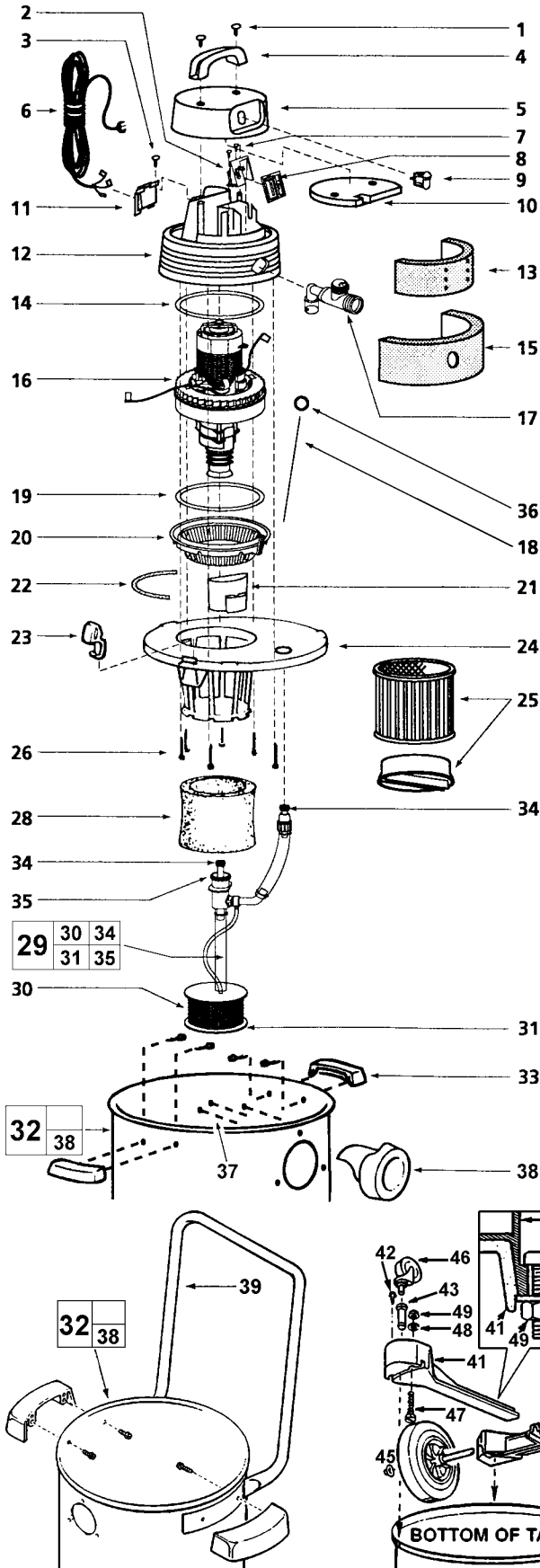
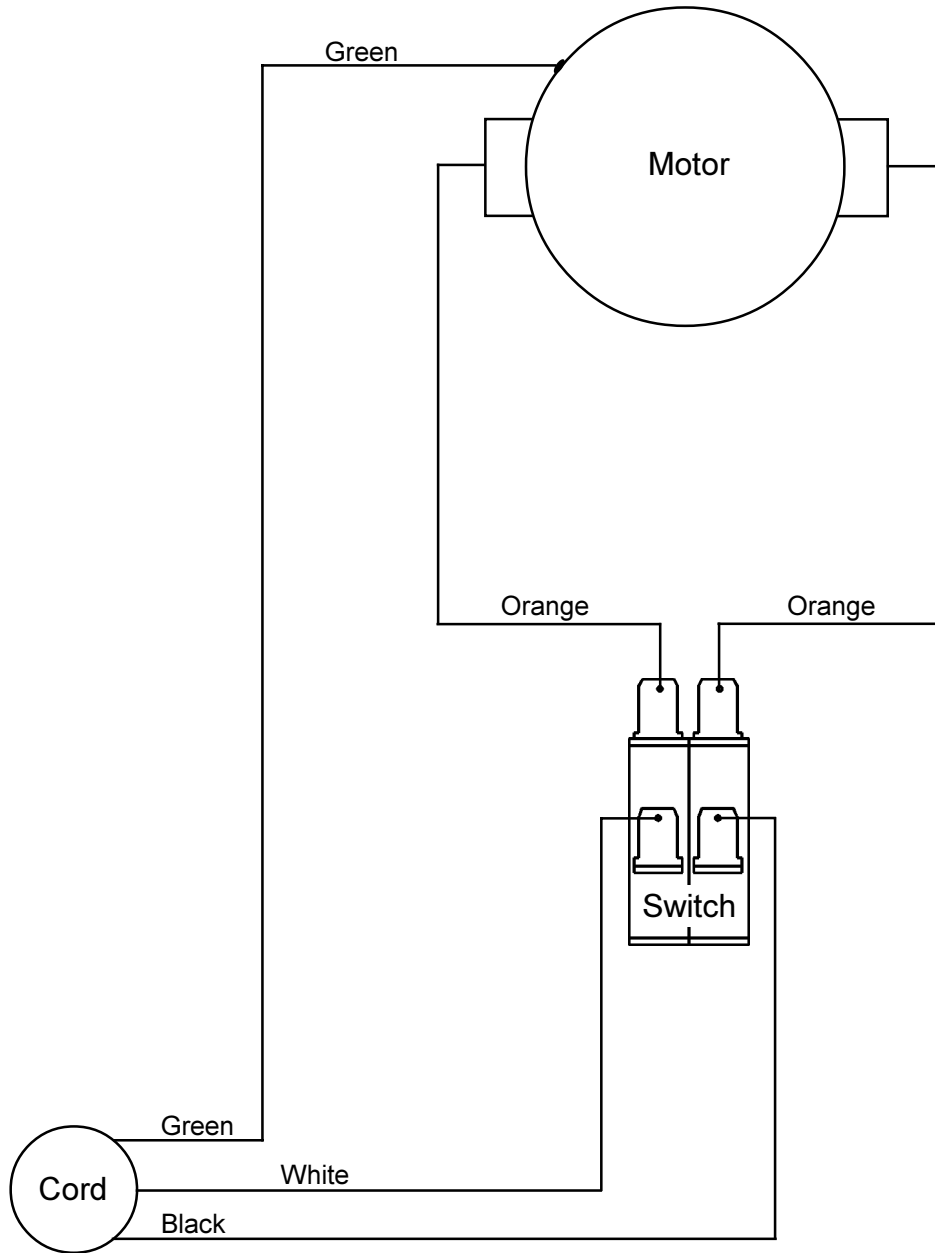


FIG.	PART NO.	DESCRIPTION OF PART	QTY
1	06-81-5010	1/4" x 3/4" Truss Hd Screw Type AB	(2)
2	23-66-0085	Switch Assembly	(1)
3	06-81-5390	#8 x 1/2" Ph Pan Hd Screw Type AB	(1)
4	43-62-1185	Handle	(1)
5	31-15-8940	Motor Housing Cover	(1)
6	22-64-0940	Cord	(1)
7	06-81-0020	#8 x 3/4" Ph Pan Hd. Screw	(2)
8	44-10-0410	Link	(1)
9	42-92-1305	Switch Cover / Actuator Assembly	(1)
10	43-84-0880	Foam Insert Cover	(1)
11	44-76-0300	Cord Retainer	(1)
12	31-50-8940	Motor Housing	(1)
13	43-76-0630	Inner Foam Motor Housing	(1)
14	43-44-0130	Upper Motor Gasket	(1)
15	43-76-0695	Outer Foam Motor Housing	(1)
16	23-30-0010	Motor	(1)
17	44-04-0040	Shut-Off Assembly	(1)
18	42-46-0200	Float Rod	(1)
19	43-44-0080	Lower Motor Gasket	(1)
20	42-68-0120	Grid Plate	(1)
21	42-46-0240	Float	(1)
22	43-44-0010	Strip Gasket	(1)
23	42-68-0690	Lid Latch	(3)
24	31-15-0535	Lid Cage / Latch Assembly	(1)
25	49-90-1830	Cartridge Filter w/Retainer	(1)
26	06-95-4010	#10 x 3/4" Hex Hd Screw Type AB	(6)
28	49-90-0770	Foam Sleeve	(1)
29	14-47-1090	Pump Adapter Kit	(1)
30	44-54-0070	Screen	(1)
31	44-04-0100	Cage Bottom	(1)
32	42-51-0460	Tank Assembly w/Inlet Fitting	(1)
33	14-34-0440	Handle Package (2 Handles, 4 Screws)	(1)
34	34-40-0300	O-Ring	(2)
35	34-40-0425	O-Ring	(1)
36	34-40-0315	O-Ring	(1)
37	06-95-5320	#10 x 1/2" Slit Hex Hd Screw	(3)
38	42-86-0120	Inlet Fitting	(1)
39	43-62-1040	Metal Handle	(1)
40	45-94-0295	Wheel	(2)
41	43-40-0280	Front Frame	(1)
42	06-81-4960	#8 x 1/2" Type A Phillips	(1)
43	44-66-0870	Caster Socket	(1)
44	43-40-0300	Rear Frame w/axle	(1)
45	42-52-0270	Hub Cap	(2)
46	45-94-0290	Caster	(1)
47	06-75-0100	1/4"-20 x 3/4" Hex Hd. Mach. Screw	(4)
48	45-88-7500	1/4" Flatwasher	(4)
49	06-55-1525	1/4"-20 Hex Nut	(4)

**Items Not Shown**

10-20-8936	Warning Label (French)	(1)
10-20-8938	Warning Label (Spanish)	(1)
10-20-0001	Trilingual Warning label	(1)
22-18-0470	Carbon Brush Set	(1)
49-90-0110	10" x 1 1/4" I.D. Hose Assembly	(1)
49-90-2100	1 1/4" Diameter Extension Wand	(1)
49-90-2110	12" Floor Nozzle	(1)
49-90-2120	12" Squeegee Insert	(1)
49-90-2130	12" Brush Insert	(1)



WIRING SPECIFICATIONS				
Wire No.	Wire Color	Origin or Gauge	Length	Terminals, Connectors and 1 or 2 End Wire Preparation
1	White	Cord	10 1/2"	Component of cord assembly
2	Black	Cord	10 1/2"	Component of cord assembly
3	Green	Cord	10 1/2"	Component of cord assembly
4	Orange	Motor	12"	Motor to switch
5	Orange	Motor	12"	Motor to switch